

**2022
Summer**

PNU Language Education Institute

Korean Language Online Two-weeks Short-term Course

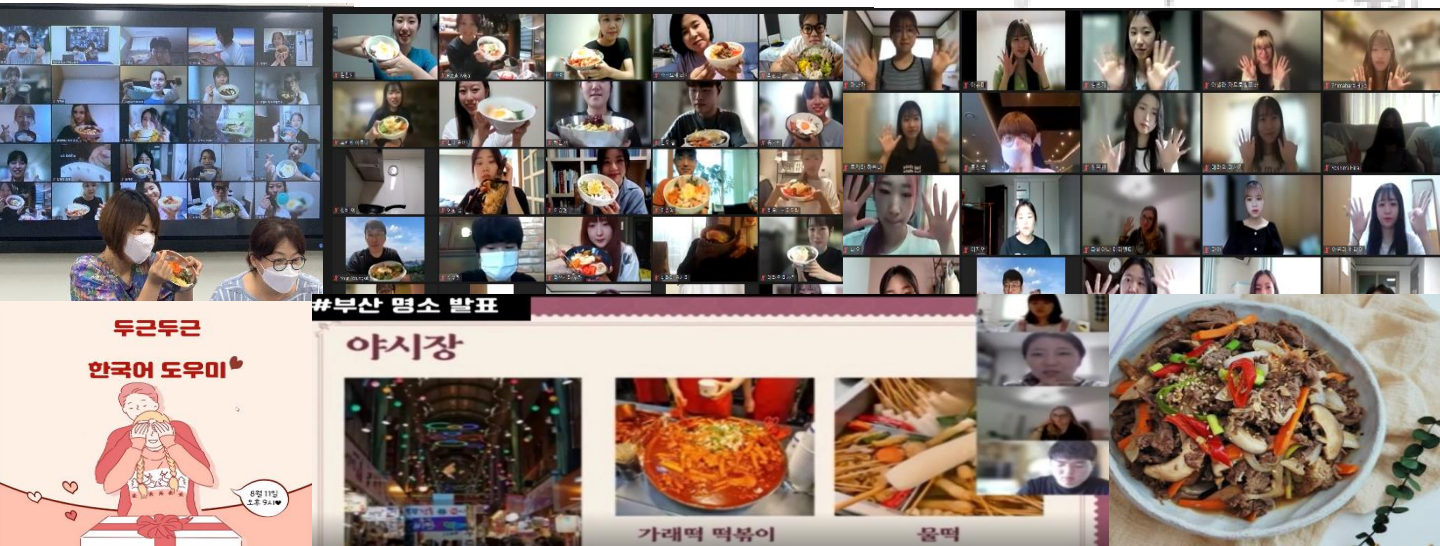
1. Contents

All Korean language class and cultural activities are conducted online, Program includes 30hours of Korean Class(27h) and cultural activities.

2. Application Deadline : July 29th

3. Course Details

Class Time	Tuition Fee	Additional Activities	Credits
2022.8.15. ~ 8.26. Mon ~ Fri 17:00 ~ 20:00 (Korean Time)	500,000KRW	* Making Korean Food(online real-time) * 1:1 or 1:2 Korean Language Partner * 1:1 Korean Tutoring with Teaching Assistant	2 credits



Contact us

- ✓ Tel. +82-51-510-1984
- ✓ E-mail. korean01@pusan.ac.kr
- ✓ Web. <http://lei.pusan.ac.kr/>



**PUSAN
NATIONAL UNIVERSITY**

4. Online Level Test : August 8

5. Program Time Table (Korean Time Based) * The above schedule is subject to change.

Time		8/15(Mon)	8/16(Tue)	8/17(Wed)	8/18(Thu)	8/19(Fri)
1 st week	17:00~18:30	Korean Class				Korean Class
	18:30~20:00					
	20:00~21:30					Culture Activity (Korean Food)
Time		8/22(Mon)	8/23(Tue)	8/24(Wed)	8/25(Thu)	8/26(Fri)
2 nd week	17:00~18:30	Korean Class			Korean Class	
	18:30~20:00				Culture Activity (Busan Online Tour Class)	Completion Ceremony
	20:00~21:30					

6. Special Supporting Programs

Program	Content
1:1 Korean Tutoring	PNU Teaching Assistant will offer 1:1 Korean tutoring on each week for 15 minutes
Korean Language Partner	Matching with PNU Korean students 1:1 or 1:2

- Refund policy
 - 90% refund after payment of the tuition fee until 15 days before the class
 - 70% refund from 14 days to 8 days before the class
 - 50% refund from 7 days to a day before the class
 - After the start of class: Not available
 - When overseas refund, bank service fee will be deducted from tuition fee.
- Further Information
 - When the number of applicants falls short of a certain level, the class may not be opened.
 - Students who are taking offline course should pay Self-quarantine fee by themselves.
 - The availability of classes may vary depending on the situation COVID-19.



2022
Summer

PNU Language Education Institute

Korean Language Online Two-weeks Short-term Course

1. 内容

所有韩国语课程及文化体验均在线运营，项目共30小时。
(2学分，韩国语课27小时，文化活动2次)。

2. 受理期间：7月29日(周五)为止

3. 讲课细节

时间	费用	备注	学分
2022.8.15. ~ 8.26 月~金17:00 ~ 20:00 (韩国时间)	500,000 KRW	<ul style="list-style-type: none"> 制作韩国饮食 * 1:1 韩语助手 * 1:1与韩国学生语言伙伴 	2 学分



咨询

✓ Tel. +82-51-510-1984

✓ E-mail. korean01@pusan.ac.kr

✓ Web. <http://lei.pusan.ac.kr/>



PUSAN
NATIONAL UNIVERSITY

4. 在线分班考试: 8月8号

5. 授课日程 (韩国时间) * 日程可以根据情况进行部分变更

时间		8/15(月)	8/16(火)	8/17(水)	8/18(木)	8/19(金)
1周	17:00~18:30	韩国语课				韩国语课
	18:30~20:00					文化活动
	20:00~21:30				(韩国料理)	
时间		8/22(月)	8/23(火)	8/24(水)	8/25(木)	8/26(金)
2周	17:00~18:30	韩国语课			韩国语课	
	18:30~20:00				文化活动 (釜山在线巡演)	结业式
	20:00~21:30					

6. 其他活动

程序分类	详细内容
1:1 学习指导	每周1次, 15分钟由研究助教1:1进行韩国语学习
韩语交换伙伴	1:1 或 1:2, 与本校韩国学生交流

• 退款标准

- 开课15天前: 退还听课费的90%
- 开学14天~8天前: 退还听课费的70%
- 开课7天~开课1天前: 退还听课费的50%
- 开学后: 无退款
- 停课: 全额退款

• 注意事项

- 各分班最小开班人数 (8人) 不足时可能会停课
- 退款引起的海外汇款手续费由学生承担
- 每个国家都可以标记听课费金额。
- COVID-19 根据情况可能会有所不同

