

Ritsumeikan Summer & Winter

R  
RITSUMEIKAN

# JAPANESE PROGRAM







## About Ritsumeikan

Ritsumeikan is an integrated academy with a rich culture of individuality and international awareness accommodating a total of 48,000 students. The current Ritsumeikan Academy has campuses in Kyoto, Shiga and Osaka, and encompasses two universities, four high schools, four junior high schools, and one primary school. Since Ritsumeikan's establishment, approximately 353,000 people have graduated from Ritsumeikan University, 11,500 from Ritsumeikan Asia Pacific University (APU). Ritsumeikan fosters learning and the development of individual talents in order to nurture just and ethical global citizens. Ritsumeikan University has been selected as designated institutions of the "Top Global University Project" by the Ministry of Education, Culture, Sports, Science and Technology (MEXT) in Japan in 2014. Ritsumeikan University will strengthen intercultural human resource development, which will allow them to collaborate with others in a global way.

### The Ritsumeikan Academy consists of

- 2 universities
- 3 main campuses
- 4 high schools
- 4 junior high schools
- 1 elementary school

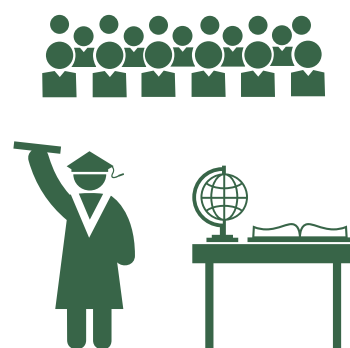


Total number of students **48,000**

Degree-seeking international students **1,253**

Non-degree international students **152**

Partner institutions  
**421 in 62 countries**



## About Kyoto

Kyoto, the capital of Japan from 794 to 1868, is well known throughout the world as a repository of Japanese art and cultural tradition. Kyoto is home to some of Japan's most important UNESCO World Heritage Sites, some of which are located right at the doorstep of Ritsumeikan. Traditional Japanese festivals, including the Gion Matsuri, one of Japan's largest and most famous, are held in Kyoto every year. The city enjoys a harmonious blend of the ancient and the modern, allowing students the opportunity to experience all aspects of Japanese culture and society. In addition to being a base of traditional industry, higher education, and tourism, Kyoto is also home to a number of cutting-edge high tech companies such as KYOSERA Corporation and Nintendo to name a few.





Welcome to Ritsumeikan Summer and Winter Japanese Program

# RSJP/RWJP

The Ritsumeikan Summer Japanese Program (RSJP) and Ritsumeikan Winter Japanese Program (RWJP) are designed for undergraduate or graduate students with minimal to advanced level knowledge of the Japanese language, providing a comprehensive introduction to Japanese language and culture.

RSJP and RWJP are programs consisting of two major subjects. Participants are enrolled in an intensive Japanese language class which provides them with a through introduction to the language. Students also participate in Japan Studies classes to learn about Japanese culture and take part in fieldwork excursions.

## Japan Studies

Japan Studies classes are held two to three times a week. In addition to the lectures on Japanese culture held in the Japanese language classes, participants are given the opportunity to take part in various fieldwork excursions and receive special lectures on Japanese culture from masters who are well respected in their field in order to reinforce what they have learnt.

- ☐ Meeting Maiko
  - ☐ Playing traditional Japanese drums
  - ☐ Visiting temples
  - ☐ Lecture on Chado
  - ☐ Cooking Japanese cuisine
  - ☐ Zen meditation
- ... AND MORE!

## Japanese Language Classes

Japanese language classes are conducted for three hours every weekday morning, maintaining an overall balance between conversation, reading, and writing, with the goal of improving overall communication skills. Lectures in class will focus on topics such as business, history, society and traditional culture to gain an understanding of the finer aspects of Japanese culture. Program participants will create a strong foundation for their future studies of Japanese through these lessons.



# Course Curriculum

## Duration of the Course

Standard Class Hours			
Program Duration	Japanese Language Class 50 min. class x 3 per day 69 total classes	Japan Studies 90 min. class x 2 or 3 per week 11 total classes	Total Class Hours
5 weeks	3450 min.	990 min.	4440 min.

### Placement Test

Participants will be initially placed into classes based on information given in their application forms and essays written in Japanese. In the first Japanese class, they will take a placement test in class in order for the teachers to ascertain their language level. Students may request to be moved to a different class, but this needs to be approved by their classroom teacher.

### Daily Schedule

<b>Japanese Class</b>	1st period 9:10-10:00 2nd period 10:10-11:00 3rd period 11:10-12:00
<b>Lunch</b>	12:00-12:50
<b>Japan Studies</b>	13:00-16:00*

\*There are 2 to 3 Japan Studies on weekdays.

Sample 01	Monday	Tuesday	Wednesday	Thursday	Friday	Saturday	Sunday
1st week	Orientation Campus tour	Placement test Welcome lunch Visit Kinkakuji temple	Japanese class	Japanese class	Japanese class Zen meditation		
2nd week	Japanese class	Japanese class Sword battle	Japanese class	Japanese class Playing drum	Japanese class		
3rd week	Japanese class	Japanese class	Japanese class Meeting Maiko	Japanese class	Japanese class Cooking Kyoto cuisine		
4th week	Japanese class Chado	Japanese class	Japanese class Kiyomizu pottery	Japanese class	Japanese class Gion Festival		
5th week	Japanese class Udon making	Japanese class Japanese Indigo dye	Japanese class Final exam	Japanese class	Japanese class Completion ceremony Farewell party		

Note: The schedule is subject to change.

## Japanese Language Class Level

	Level Description
<b>Introductory*</b>	<ul style="list-style-type: none"> <li>Never studied before</li> <li>Able to read Hiragana and Katakana</li> </ul> <p>*The Introductory class will be available for only RSJP2 and RWJP, not for RSJP1. *Minimum number of participants for this class is 10. When a minimum number of participants is not achieved, the Introductory class will not be offered.</p>
<b>Beginner I</b>	<ul style="list-style-type: none"> <li>About 150 hours of previous study</li> <li>Able to read and write Hiragana, and carry out conversation using simple sentences and words</li> <li>Completed Genki L1 - L5, NAKAMA I CH1 - CH5, Minna no Nihongo L1 - L13</li> </ul>
<b>Beginner II</b>	<ul style="list-style-type: none"> <li>About 250 hours of previous study</li> <li>Able to carry out conversations using simple sentences and words. Has studied Kanji.</li> <li>Completed Genki L6 - L12, NAKAMA I CH6 - CH11, Minna no Nihongo L14 - L25</li> </ul>
<b>Beginner III</b>	<ul style="list-style-type: none"> <li>About 300 hours of previous study</li> <li>Knowledge of 200 kanji. Able to read sentences containing Kanji.</li> <li>Completed Genki L13 - L23, NAKAMA II CH1 - CH11, Minna no Nihongo L26 - L50</li> </ul>
<b>Intermediate I</b>	<ul style="list-style-type: none"> <li>About 450 hours of previous study</li> <li>Completed beginner level textbook such as Genki, Minna no Nihongo, etc.</li> </ul>
<b>Intermediate II</b>	<ul style="list-style-type: none"> <li>About 550 hours of previous study</li> <li>Have started studying with intermediate level textbook such as Intermediate Japanese, Tobira: Gateway to Advanced Japanese, etc.</li> </ul>
<b>Advanced</b>	<ul style="list-style-type: none"> <li>More than 750 hours of previous study</li> <li>In process of or have completed intermediate level Japanese, Tobira: Gateway to Advanced Japanese, Shin Nihongo no Chukyu etc.</li> </ul>

- Class offering is subject to a sufficient number of participants with similar level of Japanese language proficiency.
- Even in cases in which a student requests a class change in order to meet the requirements of their home university's credit transfer policy, students may not move up or down in level without the teacher's permission. To ensure that students can study in an environment that maximizes their learning, they must take classes that are appropriate to their level.
- The textbooks indicated in the table above are reference purposes only, for the level of each Japanese class.

## Assessment Criteria

Students' performance in the Japanese language classes are assessed according to their class participation, attendance, assignments, quizzes, and their final examination results. Japanese Studies classes are assessed solely on attendance. The students will be given scores on all of the above criteria and the final grade will be calculated based on these scores.

Pass	A+	100 - 90
	A	89 - 80
	B	79 - 70
	C	69 - 60
Fail	F	59 - 0

## Attendance & Transcript

Each student will be required to attend more than 2/3 of the classes to receive the transcript. After successful completion of the program, Ritsumeikan University will post a certified academic transcript to your home address in your country one month after the last day of the program. If the transcript needs to be sent directly to their home university, the students need to make a request beforehand.

## Credit Transfer

Students who wish to transfer the credits they earn through the program at Ritsumeikan University must consult their academic advisor or International Office at their home university beforehand in order to avoid any problems with the credit transfer. The students' home university generally regulates the accreditation of credits.



# Campus Life

## Buddies

Ritsumeikan students play a great part in this program through their roles as volunteer buddies. Buddies will introduce participants to life on campus as well as provide assistance with daily life in Japan outside of class. They will also join participants on most field excursions for Japan Studies classes and also participate in the Japanese language classes as teaching assistants. By spending time with the buddies, participants can practice everyday conversation and at the same time make friends, both of which are highlights of the program.



## International Center at Kinugasa Campus

The International Center handles all incoming and outgoing student exchanges at Ritsumeikan. We offer RSJP and RWJP participants assistance with all aspects of academic and student life, as well as providing comprehensive support on everything from initial application procedures to sending out the final transcript at the end of the program. We hope that studying abroad with the RSJP and RWJP will help you immerse yourself further in Japanese culture and strengthen your language skills while in Japan!



This is our campus!



On the first day of the program, buddies will take the participants on a campus tour.

## Library

Over 2.3 million books in Japanese, Chinese, English, and other languages are housed in the Ritsumeikan library. Each participant will be given a library card and will be able to borrow books during the program period.



## Internet Access

Participants will be given a login ID and password, giving them access to the internet. The university also provides a campus-wide wireless network.



## Kyoto Museum for World Peace

Ever since its establishment in 1992, the Museum for World Peace has been providing a variety of exhibitions based on Ritsumeikan University's founding philosophy, "peace and democracy". Approximately 40,000 items are in stored and categorized according to three themes: "Fifteen Years' War", "Remembering recent wars" and "In the pursuit of peace."



## Medical Service Center

The Medical Service Center offers medical assistance to students with health concerns. Consultations are available in English during certain times of the day.



## Co-op

The University Cooperative (Co-op) offers everything from food, books, CDs, and even a travel service.



## Cafeteria

A wide variety of food is available at the cafeteria at reasonable prices. Halal is also available.





# How to Apply

## Step 1 Confirm the following requirements.

- 1 Students must be enrolled as an undergraduate or graduate student during the program.  
→To prove their enrolment, students will need to submit their academic transcript and enrollment certificate.
- 2 Students must have the ability to communicate in English or in basic Japanese.  
→Japan Studies will be conducted in either Japanese or English. Therefore, students must be capable of comprehending lectures in one of the languages.
- 3 Students must be able to recognize hiragana and katakana before the commencement of the program.  
→Minimum knowledge of hiragana and katakana will make their study in the short-term program more meaningful and effective.

## Step 2 Prepare the required documents and complete both the online and paper application forms.

- 1 Prepare required documents
  - ◆ **Original certificate of enrollment** and **most recent original academic transcript** from the institution the student is currently attending.
  - ◆ **Photocopies of the information pages of the student's passport.** The passport number and period of validity must be shown clearly.
  - ◆ **Two photographs** (3cm×4cm) with the student's name written on the back.
- 2 Complete the online application at Ritsumeikan University web-site.
- 3 Download a paper application from Ritsumeikan University web-site and complete it.

## Step 3 Submit the application together with the documents and make an accommodation request.

- 1 Mail the paper application with supporting documents to the following address:  
Attention: RSJP/RWJP Application  
International Center at Kinugasa Campus, Ritsumeikan University  
56-1 Toji-in Kitamachi, Kita-ku, Kyoto 603-8346, JAPAN  
TEL: 81-75-465-8230 FAX: 81-75-465-8160
- 2 Send a request on the online accommodation application.

# Prior to Departure

## 【 Program Fee 】

5 Week Program Fee

200,000 JPY

\*Subject to change

+

Housing Deposit\*

100,000 JPY

Included	NOT Included
<ul style="list-style-type: none"> <li>Japanese Language Classes</li> <li>Japan Studies</li> <li>Textbook</li> <li>Liability Insurance</li> <li>Certificate</li> <li>Transcript</li> </ul>	<ul style="list-style-type: none"> <li>Air Fare</li> <li>Meals</li> <li>Shuttle Bus between Airport and Kyoto</li> <li>Transportation</li> </ul>

\*Once participants' accommodation is determined, the participants will need to pay the remaining amount upon check-in.

\*The deposit amount will change at later date when the Ritsumeikan international dormitory fee is confirmed.

## 【 Visa Procedures 】

Participants are responsible for contacting the Japanese embassy or consulate in their home country directly to determine if they are required to apply for a visa in advance. If it is determined that they need to obtain a visa, please notify the International Center.

## 【 International Travel Insurance 】

The program fee does not cover travel insurance. We strongly recommend that all participants enroll in international travel insurance before their departure to Japan. In the case that they need to visit a hospital while in Japan, they will need to pay the full cost of the medical examination and any medication prescribed. They can apply for reimbursement after leaving Japan if their insurance covers the costs, so they must save all receipts.

If there are any inquiries, contact the International Center at:

[rsjprwjp@st.ritsumei.ac.jp](mailto:rsjprwjp@st.ritsumei.ac.jp)



# Accommodation

All students participating in Ritsumeikan Summer & Winter Japanese Program are able to apply for several different types of accommodation options through Ritsumeikan.

## Furnished Apartment

- Seed in Kyoto Nijo
- Seed in Kyoto Horikawa

Seed in Kyoto Nijo and Seed in Kyoto Horikawa are furnished apartment in the center of Kyoto city. They are conveniently located for sightseeing, easy to reach by public transportation, and in close to grocery stores and convenience stores. Seed in Kyoto Nijo is 30 minutes away by bus from the campus, while Seed in Kyoto Horikawa is 40 minutes away.

**Single** Approx. ¥145,000 per person

**Twin** Approx. ¥92,600 per person



## Hotel

- The Palace Side Hotel

The Palace Side Hotel is a standard hotel and convenient for sightseeing. It is easy to reach by public transportation, and is close to the Kyoto Imperial Palace, one of Kyoto's most popular tourist destinations. The hotel is about 20 minutes by bus to Ritsumeikan University.

**Single** Approx. ¥143,550 per person

**Twin** Approx. ¥120,450 per person



## Dormitory

- Ritsumeikan International Dormitory

Ritsumeikan's new dormitory will be available from September 2015. This dormitory will be designed to accommodate four students in each room with a common study area, kitchen and bathroom. It is located only 15 to 20 minutes walk from the university. The housing fee will be affordable and will be announced on Ritsumeikan's website in early 2015.



All the details about each accommodation are available on our website ▼ ▼ ▼

[http://www.ritsumei.ac.jp/eng/html/admissions/program\\_jp/rsjp-rwjp/sum\\_03.html/](http://www.ritsumei.ac.jp/eng/html/admissions/program_jp/rsjp-rwjp/sum_03.html/)

\*Room charges are subject to change on seasonality.

\*There may be cases where the rooms may not be available due to prior reservations during the program. In that case, other arrangements will be made.

# FAQ

If you have any questions regarding RSJP/RWJP, please refer to this FAQ or contact us by e-mail.



## <About Requirements>

1

I graduated from my university already. Am I still able to join the program?

No, you're not. You MUST be enrolled at a College, University or Graduate School during the program to apply. When you apply for our program, you will be asked to submit your home institute-issued official Certificate of Enrollment AND an official Academic Transcript. If you have already been accepted as a Graduate school student at any institution for your next semester, and are able to submit an official Certificate of Enrollment or a Notification of Acceptance, you can apply for our program.

2

Am I able to apply for the program if I have never studied Japanese?

Yes, RSJP2 and RWJP are available for those who have not previously studied Japanese. However, we recommend that all participants study at least hiragana and katakana before the program starts. RSJP1 is for only those who have studied Japanese before.

3

Can I join the program after it has already started? Or may I leave the program before the last day?

No. All participants are required to attend fully from the first day to the last day of the program.



## <About Accommodation>

4

Can I arrange my accommodation by myself?

No. For your safety reason, all participants need to stay in one of accommodations arranged by Ritsumeikan University.

5

Can I stay in the same room as my friend?

In order to give everyone a cross-cultural experience, if you are staying in a room larger than a single room, you will be arranged with someone from another university or country.

## <About Health Support>

6

If I buy a travel insurance policy before my departure, can I see a doctor free of charge in Japan?

No, you can't. This depends of your insurance plan. Usually you will be asked to pay in Japanese yen by cash on the spot. You can use the receipt to claim your money back when you return to your home country if your insurance covers the costs.

7

I have a disease and I have been taking medicines for it. Am I able to get the same medicines that were prescribed for me in my country if I go to Japan?

Pharmacies in Japan do not accept foreign issued prescriptions, and some types of medicines are prohibited. Please ask your Embassy or Consulate General before your departure regarding quantities and other regulations. Please note that most travel insurances will not cover any pre-existing medical conditions or chronic diseases.



## Program Schedule



2015 RSJP1 May 18 - June 19		
2015	February 18th	Application Period Begins
	March 18th	Application Deadline
	April 10th	Payment Due
	May 18th	Arrival Date
	May 19th	Orientation
		Campus Tour
	May 20th	First Day of Class
		Welcome Party
	June 19th	Last Day of Class
		Closing Ceremony
		Farewell Party

2015 RSJP2 July 6 - August 7		
2015	April 6th	Application Period Begins
	May 7th	Application Deadline
	May 20th	Payment Due
	July 6th	Arrival Date
	July 7th	Orientation
		Campus Tour
	July 8th	First Day of Class
		Welcome Party
	August 7th	Last Day of Class
		Closing Ceremony
		Farewell Party

2016 RWJP January 11 - February 12		
2015	September 29th	Application Period Begins
	October 30th	Application Deadline
	November 18th	Payment Due
2016	January 11th	Arrival Date
	January 12th	Orientation
		Campus Tour
	January 13th	First Day of Class
		Welcome Party
	February 12th	Last Day of Class
		Closing Ceremony
		Farewell Party

Note: All dates are subject to change.

## Program Highlights



Takigino in RSJP1

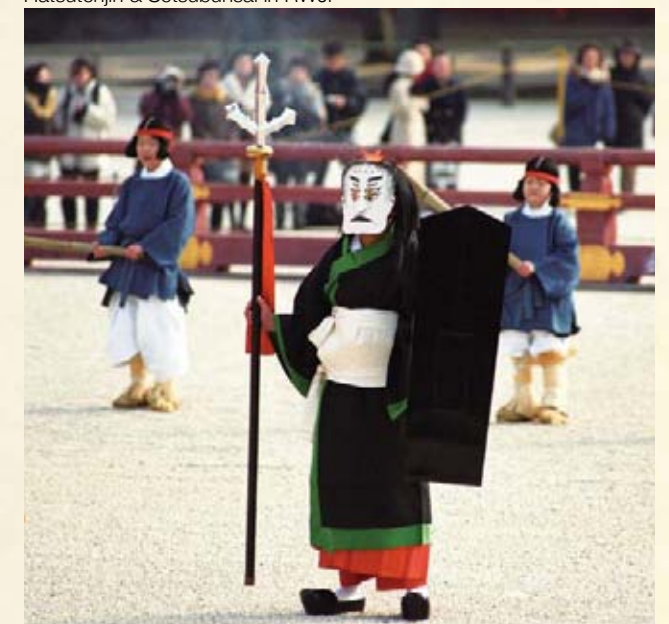


Noh "Hagoromo" By Hisanori Kongo

Gion Matsuri in RSJP2



Hatsutenjin & Setsubunsai in RWJP



## Custom Program

The International Center offers not only standard programs but also Custom Programs to universities overseas who are looking to send groups of students to Japan.

The Custom Programs are expressly tailored Japanese language programs that are coordinated by the staff of the International Center. A program coordinator will arrange a program starting anytime of the year according to the standard RSJP and RWJP programs. At least 15 students are recommended for the Custom Program and the length is available from 2 weeks.

If you would like to know more details, please contact the International Center at:

[rsjprwjp@st.ritsumei.ac.jp](mailto:rsjprwjp@st.ritsumei.ac.jp)


It was our great pleasure that we had the privilege to arrange these Custom Programs in the previous years for the following universities.

- University of Alberta
- The Princeton University
- University of Hawaii Kapiolani Community College
- The University of Adelaide
- Kyung Hee University





# Access to RU

 From  
Kansai  
International Airport

- Kansai International Airport to Kyoto  
– 1 hr. 15 min.  
by JR Limited Express "Haruka"

**SHIGA**  
(Biwako-Kusatsu Campus)

 From  
Narita International Airport

- Narita International Airport to Tokyo  
– 55 min. by JR Narita Express
- Tokyo to Kyoto  
– 2 hr. 20 min. by JR Shinkansen (Bullet Train)

 From  
Haneda Airport  
(Tokyo International Airport)

- Haneda Airport to Shinagawa  
– 15 min. by Keikyu Line Airport Limited Express
- Shinagawa to Kyoto  
– 2 hr. 10 min. by JR Shinkansen (Bullet Train)

OSAKA

TOKYO

OSAKA  
(Osaka-Ibaraki Campus)

**KYOTO**  
(Kinugasa Campus)

 From  
JR Kyoto Station

- Kyoto to Campus  
– 25 min. by taxi  
– 35 min. by bus



## Cover Picture

The cover image, from the *ukiyo-e* collection of Ritsumeikan University's Art Research Center  
arcUP4016



## International Center at Kinugasa Campus Ritsumeikan University

56-1 Toji-in Kitamachi, Kita-ku, Kyoto 603-8346, JAPAN

E-mail : [rsjprwjp@st.ritsumei.ac.jp](mailto:rsjprwjp@st.ritsumei.ac.jp)

TEL : +81-75-465-8230

FAX : +81-75-465-8160

Available Time: 10:00-17:00 (Japanese Standard Time), in Japanese / English

For more information visit

[http://www.ritsumei.ac.jp/eng/html/admissions/program\\_jp/rsjp-rwjp/](http://www.ritsumei.ac.jp/eng/html/admissions/program_jp/rsjp-rwjp/)



Ritsumeikan University (Ritsumeikan Summer & Winter Japanese Program)

Search by

**RSJP RWJP**