



**Solvay Summer School**

Brussels School - Economics & Management

AUGUST 21ST - 29TH, 2015

# SUMMER SCHOOL PROGRAMME

ON  
EUROPEAN BUSINESS  
CHALLENGES

The gateway from your Bachelor classroom into the realities of European Business & Economics



## ABOUT THE SUMMER SCHOOL

“ THE SOLVAY SUMMER SCHOOL IS AN AWESOME OPPORTUNITY TO MAKE NEW FRIENDS FROM ALL AROUND THE WORLD AND DECIDE IF STUDYING ABROAD IS REALLY FOR YOU! ”

“ FRUITFUL MOMENT CREATING NEW KNOWLEDGE, FRIENDS AND EXPERIENCES. GREAT SCHOOL AND LEADERS! ”

### Participants from 2014 edition

The Solvay European Summer School is intended to equip students with the state-of-the-art knowledge and tools of the general manager operating in a European context. The programme features classes, trips, and activities designed to give students opportunities to learn about European business challenges.

Our Summer School is a unique experience for undergraduate students, who will be able to acquire vast amounts of information and know-how about the current economic situation in Europe in an interactive way and discover the wonderful city of Brussels, which is known as the capital of Europe. This is also a wonderful opportunity to build up an international network.

During the Solvay Summer School you will be attending lectures given by internationally renowned professors and researchers from different backgrounds, while getting a taste of what the Solvay Brussels School of Economics and Management is about.

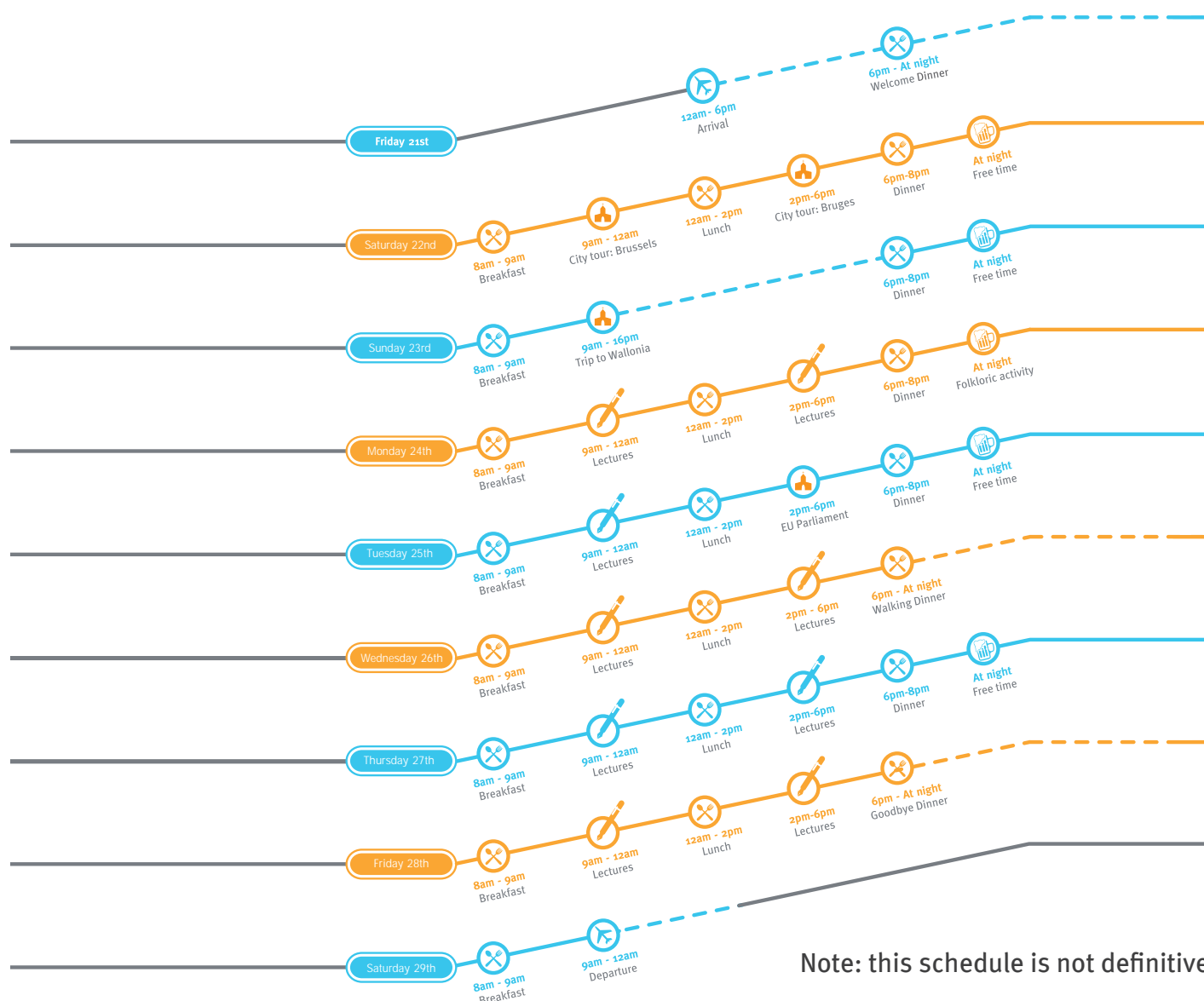
Aside from the learning experience, it is important to mention that the Solvay Summer School is a summer school organized by students for students. This means that you will get the opportunity to experience real Belgian student life and culture, because in addition to the lectures, visits and excursions are planned during the week.

It is a great opportunity for all students to gain new insights and knowledge and to meet friends from all over the world. You can attend courses relevant to your future studies and career, and at the same time enjoy the summer holidays!



# SUMMER SCHOOL ON EUROPEAN BUSINESS CHALLENGES

## SOLVAY SUMMER SCHOOL, A MIX OF ACADEMIC CONTENT AND LEISURE



Note: this schedule is not definitive





## EUROPEAN BUSINESS CHALLENGES

### Course content

The course aims to provide a broad overview and analysis of the business environment in the European Union. The main emphasis is put on European entrepreneurship, geopolitical concerns and on understanding of European economic news. The institutional structure of the European Union will be slightly examined and students will have the opportunity to visit the European Parliament. Finally, the main issues of doing business in Europe will also be addressed.

---

### Entry requirements

To be eligible for the Solvay Summer School Programme the participant is supposed to fulfill the entrance requirements for the masters taught at the Solvay Brussels School of Economics and Management. In addition, if you are studying in the fields of Human Sciences or Natural Sciences, you are also eligible for our courses.

---

### Learning outcomes

By participating in this programme students will be able to improve their professional skills, apply their academic knowledge to real situations and build their professional network.

---

### Certificates

We offer a certificate for students who are accepted onto the course if the student attends 75% of the seminars and passes the final evaluation.

---

### Additional information

Language of instruction: English.





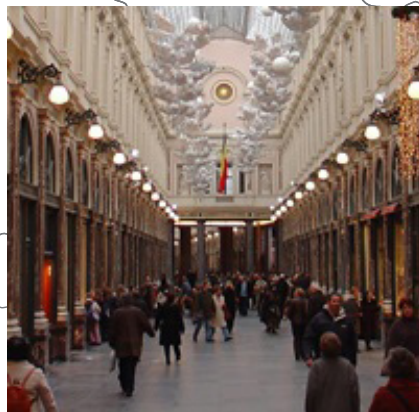
# SUMMER SCHOOL ON EUROPEAN BUSINESS CHALLENGES



Brussels, the capital of Belgium, is located in the middle of Europe and hosts a considerable number of international organizations, including NATO and the EU Parliament.

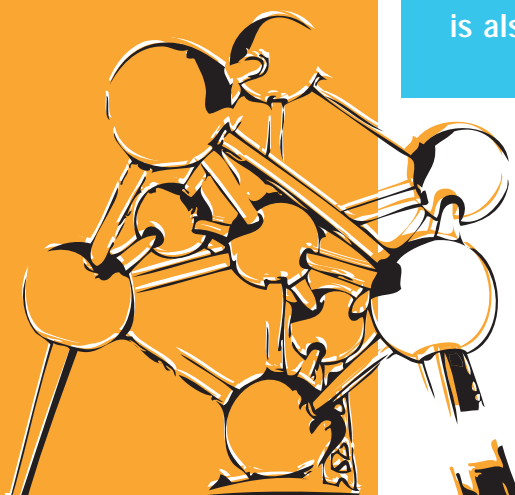
The city has two official languages: Dutch and French. Many people can also speak English.

Brussels is a real student city with more than 30,500 students and contains a lot of parks. Chocolate, beer and french fries are among the many things that will make you fall in love with this city at the heart of Europe.



Ernest Solvay founded the Business School in 1903. The Solvay Brussels School of Economics and Management is ranked as the first Belgian Business School for its master in management. This result is mainly due to its demanding courses, its perfect location in Brussels and an education programme that successfully combines management and economics courses. SBS-EM is also part of a full university (ULB).

Our school has 8 competence centers and 3 renowned research centers. SBS-EM is also well known for the participation of their students through the student association (BE Solvay).



## ABOUT THE TEACHERS

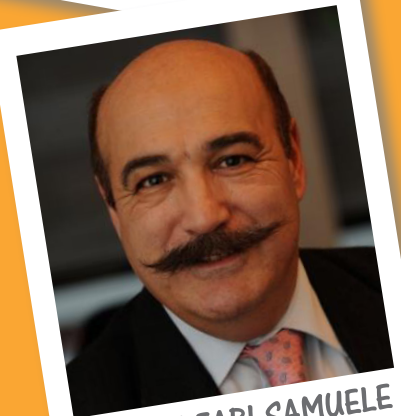
**Mr. Olivier Witmeur** has a Master's degree in Business Engineering and a PhD in Entrepreneurship. He is a professor at the Solvay Brussels School of Economics and Management, where he holds the Bernheim Chair in Entrepreneurship and manages the entrepreneurship center of the university. He mainly teaches Entrepreneurship, Entrepreneurial Finance and Business Planning. His research focuses on the growth of new ventures. He is also the Chairman of the Brussels Council for Research and Innovation Policy and an active member or strategic advisor to numerous growth-oriented entrepreneurial ventures.

**Mr. Samuele Furfari** has an applied science doctorate in chemical engineering from the ULB. He has been working for more than 30 years at the European Commission where he has devoted his entire career to energy policy. He has designed and implemented various energy policies and currently contributes to the coordination of various energy policies by advising the Director General. He teaches the Geopolitics of Energy at the ULB.

**Mr. Michel Allé** has been the Non-Executive Director and permanent representative of s.a. de Participations et de Gestion (SPDG), at D'Ieteren SA since 2001. He is a civil engineer and economist (ULB). He joined Cobepa in 1987 and served as Member of the Executive Committee from 1995 to 2000. He was the Finance Director of Brussels Airport (2001-2005) and has been finance Director of SNCB Holding since 2005 and was also appointed as a Director of Telenet and Zetes Industries. He is a professor at the ULB.



MR. WITMEUR OLIVIER



MR. FURFARI SAMUELE



MR. ALLÉ MICHEL

# SUMMER SCHOOL PROGRAMME ON EUROPEAN BUSINESS CHALLENGES

## OFFER CHOICE

€ 750\*

(35 places available)



Course Material



Breakfast, Lunch  
and Restaurant



Bus tour, city visits  
and EU institutions



Student room  
on the campus

€ 450\*

(unlimited)



Course Material



Breakfast, Lunch  
and Restaurant



Bus tour, city visits  
and EU institutions

€ 380\*

(unlimited)



Course Material



Breakfast, Lunch  
and Restaurant

\* The tuition fees and the offers above do not take into account the travel costs to reach Brussels.

## HOW TO APPLY

### Course: European Business Challenges

Credits: 2 ECTS, Bachelor's/Master's students

Period: August 21st-29th, 2015

First application deadline: 10th May 2015

Second application deadline: 10th July 2015

### Requirements

Current Bachelor's students preferably in a faculty of Economics and Business (35 places)

Current Master's students preferably in a faculty of Economics and Business (15 places)

Minimum age: 18

Language: English

### Selection Process

1. Registration of the students by email at [summerschool@solway.edu](mailto:summerschool@solway.edu) (including your CV and the application form)
2. Confirmation of your application request
3. Verification of the required criteria
4. Acceptance of roughly 50 applicants
5. A second round of application after May if there are still places available

### Mail of acceptance

In mid-May, every applicant will be aware of the status of his application.

An invoice will be sent by mail and you will have 20 days to transfer the money to our bank account.